

LABORTOPS

valid until 31st March 2019

LLG-Disposable Gloves *ergo*



- Very Comfortable to Wear
- Safe Grip



Page 3

Occupational Safety	2	Centrifuging	20
Syringe Filters	4	Heating and Drying Incubators	22
Chromatography	6	General Laboratory Consumables	24
Filtration	8	Weighing	25
Plastic Containers	9	Clean Room	26
Liquid Handling	10	Stirring	27
Microbiology	12	Temperature Measurement	28
Spectroscopy	13	Turbidity Measurement	29
pH Measurement	14	Volumetry	30
Tempering	16	Time Measurement	31
Sampling	18	Dispensing	32

Safety Eyeshields uvex x-fit



Top Brand at a Top Price!

uvex



NEW

- Classic safety spectacles with good coverage of the whole eye area
- Lightweight at just 23 grams
- Innovative hinged sidearm design
- Frame colour: translucent blue or translucent grey
- Completely metal-free
- Reliable UV 400 protection

uvex **supravisión excellence** coated lenses are anti-fog (for at least 16 seconds) on the inside, while the outside offers extreme scratch and chemical resistance. The anti-fogging properties are permanent even after repeated cleaning. The lenses are also easy to clean and less susceptible to dirt due to the non-stick nanotechnology.

uvex **supravisión sapphire** coated lenses offer excellent scratch resistance.

Colour	Lens	PK	Cat. No.
blue	transparent/UV 2-1.2, sv excellence	1	4664173*LLG
grey	transparent/UV 2-1.2, sv sapphire	1	4664174*LLG
grey	amber/UV 2-1.2, sv excellence	1	4664175*LLG

LLG-Safety Eyeshields lady



Slim Fit

LLG
LABWARE



- CE approved to EN166 and EN170
- Panoramic wrapping lens
- 180° visual field
- Frame made of tested hypo-allergenic material
- Temples with rubber tips, adjustable in length and inclination
- Nosepad and terminal tips made from soft, moldable material for optimal comfort and individual customisation
- 100 % UV protection (up to 400 nm)
- Weight only 25 g

Colour	Lens	PK	Cat. No.
white/green	clear, AF+, AS+, 2C-1.2 U 1 FT KN CE	1	9006007*LLG
white/pink	clear, AF+, AS+, 2C-1.2 U 1 FT KN CE	1	9006008*LLG
black/green	clear, AF, AS, 2C-1.2 U 1 FT CE	1	9006009*LLG

Eye Wash Bottle, 0.9 % NaCl, Sterile

STERILE

plum

- 500 ml wash bottle (time approx. 2 minutes) saline solution (0.9 %), conforming to the natural salinity of the eye
- Ergonomic eye cup - keeps the eyes open during application
- According to DIN EN 15154-4
- Shelf life: 3 years



Capacity	PK	Cat. No.
ml		
500	1	9733793*LLG

Eyewash Bottle pH-Neutral, Sterile

STERILE

plum

A small, handy bottle containing 4.9 % sterile phosphate buffer solution, that neutralises the eye's fluid after accidents involving acids and alkalis.

- rinsing time: about 2 minutes
- according to DIN EN 15154-4
- shelf life: 3 years



Capacity	PK	Cat. No.
ml		
200	1	9733788*LLG

Precision Wipes, KIMTECH SCIENCE*, 1-ply

Kimberly-Clark
PROFESSIONAL

Exceptional
Workplaces

Precision tissue wipes for critical cleaning, lint-free, highly absorbent and strong, even when wet. 1-ply, white.



Dimensions	Package contents	PK	Cat. No.
mm			
304 x 304	Box of 196 wipes	1	9413020*LLG
115 x 215	Box of 280 wipes	1	9413021*LLG

LLG-Disposable Gloves *ergo*, Nitrile, Powder-Free

EN 374 EN 374 EN 420



- Very Comfortable to Wear
- Safe Grip
- Cost Efficient



The *ergo* disposable, protective, nitril gloves combine the comfort and "feel" of latex with the physical and chemical endurance of nitrile, with no risk of allergies. The ideal glove for all applications requiring high tactile sensation and protection against chemicals.

- **Thin - very comfortable to wear**
- Excellent tactile sensitivity - similar to latex
- Tried and tested quality product made of nitrile
- Excellent resistance to skin irritants in foodstuffs
- Specially formulated for a more resilient glove
- For single use in applications with an increased need for safety when handling chemicals

- Free from phthalates/softeners and allergenic latex proteins
- Easy to wear and particularly skin-friendly through special finishing process
- Colour: Lavender Blue
- Suitable for areas subject to HACCP standards
- **Cat. III low chemical resistant. AQL 1.5**

According to ASTM F 1671 (ISO 16604) for protection against viral penetration.

According to EN 420 and DIN EN ISO /IEC 17025, DIN EN 45011. Suitable for food handling.

Glove shape: flat with rolled edge (ambidextrous)
Material: nitrile
Colour: lavender blue
Outside: textured fingers
Inside: powder-free halogenated
Size/total length: XS, S, M, L, XL/med. 240 mm
Thickness **(measured in double layer): 0.12 mm**

Advantage Pack

Size	PK	Cat. No.
S	200	9006371*LLG
M	200	9006372*LLG
L	200	9006373*LLG
XL	180	9006374*LLG

LLG-Glove Dispenser, Coated Wire



Dispenser for 3 boxes, with top or front insert. Mounting material included.

Dispenser for 1 box, with top or side slot. Mounting material included.



9.405 371



9.405 372

For	Description	Dimensions (W x D x H) mm	PK	Cat. No.
3 Boxes, 250 x 80 mm	front insert	260 x 90 x 440	1	9405369*LLG
3 Boxes, 255 x 85 mm	top insert	265 x 95 x 400	1	9405370*LLG
1 Box, 72 mm depth	top/side insert	180 x 85 x 140	1	9405371*LLG
1 Box, 135 x 85 mm	side insert	265 x 100 x 155	1	9405372*LLG

Syringe Filters



CHROMAFIL®, Cellulose mixed ester (MV)



Hydrophilic membrane. This membrane is recommended for all filtrations of aqueous or polar organic samples.

Filter diam.	Pore size	Housing	Sterile	PK	Cat. No.
mm	µm				
25	0.45	PP-colourless/yellow	-	100	9049032*LLG

CHROMAFIL®, Glass-fibre (GF)



Inert Filter, nominal pore size 1 µm, allows higher flow rates than smaller pore filters; for solutions with high loads of particulate matter or for highly viscous solutions (e. g. soil samples, fermentation broths) as prefilters for other CHROMAFIL® filters, they prevent plugging of the membrane.

Filter diam.	Pore size	Housing	Sterile	PK	Cat. No.
mm	µm				
25	1.00	PP-yellow/black	-	100	9049078*LLG

CHROMAFIL®, Polyester (PET)



Hydrophilic membrane for polar as well as non-polar solvents. The HPLC filter, especially suited for mixtures of water and organic solvents; for TOC/DOC determination; not cytotoxic, does not inhibit the growth of microorganisms and higher cells.

Filter diam.	Pore size	Housing	Sterile	PK	Cat. No.
mm	µm				
15	0.20	PP-yellow/orange ¹⁾	-	100	9049065*LLG
15	0.45	PP-colourless/orange ¹⁾	-	100	9049066*LLG
25	0.45	PP-colourless/orange	-	100	9049069*LLG
25	0.45	PP-colourless/orange	-	400	9049070*LLG

¹⁾ with mini tip outlet

CHROMAFIL®, Polyamide (PA)



Hydrophilic membrane.
The membrane is recommended for filtration of medium polar organic/aqueous liquids.

Filter diam.	Pore size	Housing	Sterile	PK	Cat. No.
mm	µm				
25	0.45	PP-colourless/green	-	100	9049051*LLG

LLG-Syringe Filters *SPHEROS*



- **Top Quality at a Top Price**
- **Tested by an Independent Analytical Laboratory**



Cost-effective syringe filters for filtration of a broad variety of solvents and aqueous or inorganic solutions. These syringe filters cover most applications in HPLC, pharmaceutical, environmental, biotechnology, and food and beverage testing laboratories.

- Robust Polypropylene housing
- Multifunctional syringe filters with female Luer-Lock inlet and male Luer-Slip outlet
- Suitable for all syringes with Luer connection
- Sterile or non-sterile
- Sterile products in individual hard blister packaging and dispenser box



Cellulose Acetate (CA)



Hydrophilic membrane for filtration of aqueous liquids. Low protein binding capacity. Especially suitable for biological macromolecules, water soluble oligomers and polymers. With female Luer-Lock inlet and male Luer-Slip outlet. Sterile products in individual hard blister packaging and dispenser box.



Filter diam.	Pore size	Housing	Sterile	PK	Cat. No.
mm	µm				
13	0.22	PP, red	-	100	6272802*LLG
13	0.45	PP, red	-	100	6272803*LLG
25	0.22	PP, red	-	50	6272804*LLG
25	0.45	PP, red	-	50	6272805*LLG
13	0.22	PP, red	+	100	6272806*LLG
13	0.45	PP, red	+	100	6272807*LLG
25	0.22	PP, red	+	45	6272808*LLG
25	0.45	PP, red	+	45	6272809*LLG

Polyamid/Nylon (NY)



Hydrophilic membrane for filtration of aqueous and organic/aqueous liquids with medium polarity. Very good chemical resistance to esters, alkaline solutions and alcohols. With female Luer-Lock inlet and male Luer-Slip outlet.

Filter diam.	Pore size	Housing	Sterile	PK	Cat. No.
mm	µm				
13	0.22	PP, pink	-	100	6272810*LLG
13	0.45	PP, pink	-	100	6272811*LLG
25	0.22	PP, pink	-	50	6272812*LLG
25	0.45	PP, pink	-	50	6272813*LLG

PTFE



Hydrophobic membrane for filtration of non-polar liquids and gases. Very good chemical resistance to all kinds of solvents and alkaline solutions. With female Luer-Lock inlet and male Luer-Slip outlet.

Filter diam.	Pore size	Housing	Sterile	PK	Cat. No.
mm	µm				
13	0.22	PP, white	-	100	6272816*LLG
13	0.45	PP, white	-	100	6272817*LLG
25	0.22	PP, white	-	50	6272818*LLG
25	0.45	PP, white	-	50	6272819*LLG

LLG-2in1 KITS



2in1 KITS contain 100 vials and 100 closures in a PP Box. As both components are always required at the same time, 2in1 KITS are a convenient way to store all required items for analysis, with all advantages of sourcing individual components (cleanroom packaging of the vials, packaging is reclosable, etc.).



LLG-2in1 KITS with Screw Neck Vials ND8 (small opening)

Description	Capacity	Cover type	PK	Cat. No.
clear	ml 1.50	Screw Cap, black, hole, Silicon white / PTFE red	100	6238965*LLG

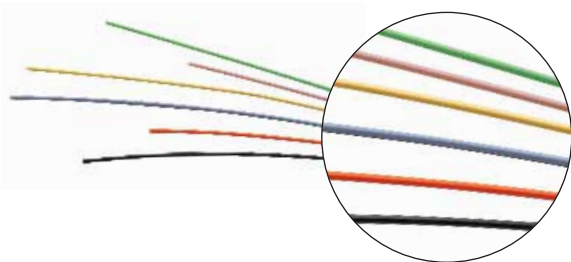
LLG-2in1 KITS with Short Thread Vials ND9 (wide opening)

Description	Cover type	PK	Cat. No.
clear	Short Thread Cap, blue, hole, Silicon white / PTFE red	100	9003560*LLG
clear	Short Thread Cap, transparent, hole, Silicon white / PTFE red	100	9003561*LLG
amber, labelling field	UltraClean Short Thread Cap, blue, hole, Silicon white / PFE red	100	6266871*LLG

LLG-2in1 KITS with crimp neck vials ND11 (wide opening)

Description	Cover type	PK	Cat. No.
clear	Crimp Cap, silver, hole, Natural Rubber red-orange / TEF transparent	100	6257139*LLG

Tubing, PEEK



Tubing made of Polyetheretherketone (PEEK), good chemical resistance, pressure stable up to 480 bar (7.000 psi, 48.000 kPa), up to max. 100 °C, colour coded.

Int. diam. mm	Ext. diam. mm	Length m	Colour	PK	Cat. No.
0.13	1.6	1.5	red	1	4662782*LLG
0.18	1.6	1.5	yellow	1	4662783*LLG
0.25	1.6	1.5	blue	1	4662784*LLG
0.13	1.6	3	red	1	4662785*LLG
0.18	1.6	3	yellow	1	4662786*LLG
0.25	1.6	3	blue	1	4662787*LLG
0.13	1.6	15	red	1	4662788*LLG
0.18	1.6	15	yellow	1	4662789*LLG
0.25	1.6	15	blue	1	4662790*LLG
0.13	1.6	30.5	red	1	4662791*LLG
0.18	1.6	30.5	yellow	1	4662792*LLG
0.25	1.6	30.5	blue	1	4662793*LLG

Accessories for PEEK Tubing



Fingertight fittings for HPLC tubing made of PEEK.

Type	Pressure max. bar	PK	Cat. No.
1/16" ... 10-32 UNF	345	10	4664157*LLG
1/32" ... 10-32 UNF (long)	345	10	4664158*LLG
1/32" ... 10-32 UNF	345	10	4664159*LLG
1/32" ... 6-40 UNF	190	5	4664160*LLG

GC SGE Syringes for autosampler

**SGE MS syringe and needle range:**

Designed to improve the sensitivity of your MS results. The ultra smooth removable needles enable reduced non-specific sample interaction and increased analyte recovery.

SGE Syringe Range:

Reduced carryover, adhesive contamination, and sample interaction, improved solvent resistance, these syringes are designed and tested to meet critical specifications and offer a very high level of Durability, Clarity and Accuracy.

SGE autosampler syringes:

Designed and tested to meet critical autosampler specifications. The unique plunger design minimizes bending and seizing, and the cone tip needle point style has been developed specifically to withstand multiple fast septum injections.

- With fixed or removable needle
- Two different needle diameters and tapered needles
- High reproducibility, low carry-over



- **The First Choice for GC Users**
- **High Solvent Resistance**
- **Low Carry-Over**

For manufacturers/models	Capacity µl	Needle length mm	Gauge (OD) mm	Needle Type	PK	Cat. No.
Agilent 7673, 7683, 6850	10	42	23-26s (0.63/0.47)	fixed	1	6226427*LLG
	10	42	23s (0.63)	fixed	6	6050962*LLG
CTC: CombiPal, GC PAL	10	50	26 (0.47)	fixed	1	7671795*LLG
CTC: Thermo TriPlus	5	50	23 (0.63)	fixed	1	7607298*LLG
	5	50	26 (0.47)	fixed	1	7900714*LLG
	10	50	23 (0.63)	fixed	1	7656984*LLG
	10	50	23 (0.63)	fixed	1	7607297*LLG
	10	50	23 (0.63)	fixed	6	9221291*LLG
	10	50	26 (0.47)	fixed	6	7612636*LLG
	10	50	26 (0.47)	removable	1	7628769*LLG
	10 (Gas tight)	50	26 (0.47)	fixed	1	9221289*LLG
	10 (Gas tight)	50	26 (0.47)	removable	1	7629523*LLG
	25 (Gas tight)	50	23 (0.63)	fixed	1	7628136*LLG
CTC: Thermo AS3000, AS2000, AS200/80; Bruker (Varian)	10	50	26 (0.47)	removable	1	6269487*LLG
Shimadzu AOC14, AOC17, AOC20	5	42	23s (0.63)	fixed	1	6205990*LLG
Perkin-Elmer	5	70	23s (0.63)	fixed	1	9221282*LLG
	5	70	26s (0.47)	fixed	1	9221281*LLG
	5 (Gas tight)	70	23s (0.63)	fixed	1	6204955*LLG

LLG-Qualitative Filter Paper, circles



**Very fast, pore size
12 to 15 µm**

- For coarse and voluminous
precipitates like hydroxides
and sulphides

Diam. mm	Filtration time secs.	PK	Cat. No.
90	10	100	9045830*LLG
110	10	100	9045831*LLG
125	10	100	9045832*LLG
150	10	100	9045833*LLG
185	10	100	9045834*LLG

LLG-Qualitative Filter Paper, folded filters



**Medium fast, pore size
5 to 8 µm**

- For fast filtration with
fine particles

Diam. mm	Filtration time secs.	PK	Cat. No.
70.0	50	100	7659027*LLG
125.0	50	100	9045825*LLG
150.0	50	100	9045826*LLG
185.0	50	100	9045827*LLG
240.0	50	100	6242632*LLG

Funnels, DURAN®



DIN ISO 4798. With short stem.
Glass Type I/neutral glass as per
USP, EP and JP. Autoclavable.

Diam. mm	For filter paper diam. mm	Height mm	DIN	PK	Cat. No.
35	45 - 55	60	4798	1	213512308*SCHOTT
45	55 - 70	80		1	213512805*SCHOTT
55	70 - 90	95	4798	1	213513304*SCHOTT
70	110 - 125	125		1	213513801*SCHOTT
80	125 - 150	140		1	213514103*SCHOTT
100	150 - 185	180	4798	1	213514609*SCHOTT
120	185 - 240	210		1	213515108*SCHOTT
150	240 - 270	265	4798	1	213515708*SCHOTT
200	320 - 385	325		1	213516104*SCHOTT
300	500	409		1	213516901*SCHOTT

Funnel Stands LaboPlast®, PP



- Easy and Flexible Height Adjustment
- Comfortable and Smooth Operation



White, unbreakable, chemically resistant.
For 2 or 4 funnels. Robust, heavy base provides good stability.
Variable height adjustment up to 450 mm. Thanks to a magnet
system, no clamping screws are necessary. The height of the
funnel holder can be adjusted easily and flexibly with one hand.

With 2 or 4 aperture reduction inserts for small funnels.
Suitable for funnels with diam. 40 to 180 mm.

To hold funnels piece	Dimensions (W x D x H) mm	PK	Cat. No.
2	140 x 300 x 480	1	9069922*LLG
4	150 x 550 x 500	1	9069924*LLG

Aspirator Carboys, Type 2319, 2250, with handle, PP



Thermo
SCIENTIFIC



With 83 mm diameter neck, screw cap and shoulder handles. Graduated. For nutritive media, distilled water or other solutions. Leakproof. Not for use with aggressive substances. Neck also accepts stoppers, 36 mm in height and a top/bottom diameter of 75/62 mm. Autoclavable - for best results, autoclave using a properly vented closure.

Type	Description	Capacity	PK	Cat. No.
		Litres		
2319	with stopcock	10	1	9002721*LLG
2319	with stopcock	20	1	9002722*LLG
2319	with stopcock	50	1	9002723*LLG
2250	without stopcock	10	1	9011102*LLG
2250	without stopcock	20	1	9011103*LLG
2250	without stopcock	50	1	9011104*LLG

Spray Bottles, PP



VITLAB
Competence in Labware

Transparent bottles made from PP. Sprayer insert with stable, smooth pump trigger and adjustable spray nozzle, which can be regulated from the finest mist (nebulising) to a precise liquid jet. Range: approx. 3-4 meters.

Capacity	Colour	PK	Cat. No.
ml			
1000	transparent with imprint "Ethanol"	1	6281023*LLG

LLG-Narrow-Mouth Bottles with cap, LDPE, economy pack



Transparent with cap.

Capacity	Diam.	Thread external diam.	Height	PK	Cat. No.
ml	mm	mm	mm		
100	47.0	18	105	20	9073501*LLG
250	63.0	25	119	10	9073502*LLG
500	78.0	25	152	10	9073503*LLG
1000	96.0	28	206	4	9073504*LLG

LLG-Sample Containers, PP, with screw cap, PP



White, with screwed-on lid.

Capacity	Height	Ø with Cover	PK	Cat. No.
ml	mm	mm		
30	19	58	10	9402310*LLG
75	47	58	10	9402313*LLG
310	81	81	10	9402318*LLG
600	67	119	10	9402321*LLG
1250	130	119	5	9402324*LLG

LLG-Disposable Reagent Reservoirs
economy, PS



Made from polystyrol. Designed for use with multi-channel pipettes and can accommodate up to 12-channel standard pipettes. Angled sides and a V-shaped bottom allow maximum recovery of reagents. All reservoirs have internal graduated volume lines and pour-spouts on the corners. 25 ml or 50 ml versions. Available as sterile and non-sterile.

Capacity	Sterile	Package contents	PK	Cat. No.
ml				
25	-	bulk	100	6282144*LLG
25	+	single packed	100	6282145*LLG
50	-	bulk	100	6282146*LLG
50	+	single packed	100	6282147*LLG

Optifit Tips in FlexiBulk Pack



Compatible with other
Pipette Brands



FlexiBulk packs comprise the same high-quality tips as Sartorius Optifit Tips available in tip racks and refill packages. Optifit Tips provide the following advantages:

- Perfect fit and seal with Sartorius pipettes to ensure the highest possible accuracy and precision
- Ergonomic and light tip attachment and ejection enabled by the Optiload feature in Sartorius Picus® NxT, Picus®, eLINE®, mLINE® and Proline® Plus pipettes
- Compatible with most other pipette brands
- The environmentally friendly PET packs are 100 % suitable to be used as energy waste
- Compliance with ISO 9001, ISO 14001 and ISO 13485 quality standards
- Free of RNase, DNase and endotoxins

Capacity	Length	Pack size	PK	Cat. No.
µl	mm			
0.5-200	51	1 box of 960	960	7661472*LLG
5-350	54	1 box of 960	960	6288468*LLG
10-1000	71.5	1 box of 480	480	6269234*LLG
50-1200	71.5	1 box of 480	480	6272394*LLG

Pipette stand Universal for single and
multi-channel Microliter Pipettes



For all common Pipette Brands



- Holds up to 8 single-channel, 4 multi-channel, or a combination of both pipettes.
- Compatible with all pipette brands
- Inserts on the upper holders can be added or removed to accommodate the fit of different pipette widths
- Weighted base allows for easy one-handed removal or replacement of pipettes
- Pipettes are held in a vertical position to help prevent contamination
- Assorted colour options allow for colour coding pipette location
- Dimensions (W x H): 229 x 408 mm

Colour	Lower Holder	Upper Holder	PK	Cat. No.
Assorted*/clear	8 x clear	8 x clear / 8 x assorted	1	6290241*LLG
Purple/clear	8 x purple	8 x purple / 8 x clear	1	6290246*LLG
Blue/green	8 x blue	8 x blue / 8 x green	1	6290247*LLG
*purple, yellow, red, orange, green, grey, clear, blue				

Single Channel Microliter Pipettes Acura® manual 825/835, variable



- **Smart and Reliable Volume Settings**
- **Easy Tip Ejection**
- **Ergonomic Design**



The latest Acura® manual pipette line was built with the same attention to detail that made the brand famous over several instrument generations. Introducing a smooth, modern design with easy volume reading. It also features a number of innovations enabling safe and easy, high performance pipetting.

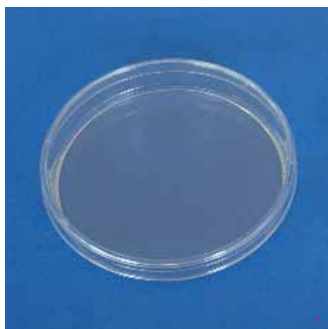
- Effortless activation
- Smart and reliable volume adjustment
- Precision digital display visible at all times
- Justip™ adjustable tip ejector fitting most tips
- Swift-set user calibration system
- Shock, UV-light and autoclaving resistance
- Three-year warranty

Type	Capacity	Increments	Accuracy max. vol. (± R%)	Precision max. vol. (≤ CV%)	PK	Cat. No.
	µl	µl				
825	0.1-2	0.002	2.0	1.5	1	9411590*LLG
825	0.5-10	0.01	1.0	0.5	1	9411591*LLG
825	1-10	0.01	1.0	0.7	1	9411592*LLG
825	2-20	0.02	1.0	0.5	1	9411593*LLG
825	5 - 50	0.1	1.0	0.4	1	9411594*LLG
825	10-100	0.1	0.8	0.2	1	9411595*LLG
825	20-200	0.2	0.6	0.2	1	9411596*LLG
825	100-1000	1	0.5	0.2	1	9411597*LLG
835	200-2000	0.002	0.5	0.2	1	6230186*LLG
835	500-5000	0.01	0.6	0.3	1	9411598*LLG
835	1000-10000	0.01	0.5	0.2	1	9411599*LLG

LLG-Petridishes, PS



- Produced in Clean Room ISO 6
- Premium Quality at a Top Price



Made of high quality optical clear polystyrene. Produced under aseptic conditions in an ISO 6 cleanroom. (Contact plate with counting grid).

- With a smooth surface for an optimal distribution of the transport medium
- Stable thickness to prevent any deformations while in use
- Stackable
- With or without vents
- Aseptic (90 mm diam.) or beta irradiated sterile versions (all sizes)
- Packed in sleeves to 10 or 20 dishes (90 mm diam. dishes)

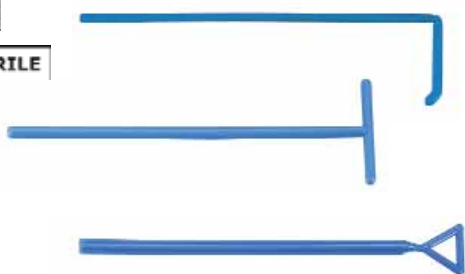
Ext. diam. mm	Height approx. mm	Description	Sterile	PK	Cat. No.
90	16	with triple vents	*	480	6285823*LLG
90	16	without vents	*	480	6285824*LLG
90	16	with triple vents	+	480	6285816*LLG
90	16	without vents	+	480	6285817*LLG
60	14	with triple vents	+	1000	6285818*LLG
60	14	without vents	+	1000	6285819*LLG
55	17	contact plate	+	1000	6285821*LLG
150	19	with triple vents	+	180	6285822*LLG

* aseptic

LLG-Spatulas, sterile



STERILE



Ideal for the uniform spreading of cell cultures and liquids.

- Smooth, rounded surfaces for uniform spreading without scratching the agar surface
- Ethylene oxide sterilized
- Sterile, 10 per bag or individually packed
- Autoclavable

Description	Width mm	Length mm	Material	Package contents	PK	Cat. No.
L-shaped	38	156	ABS	50 x 10 bags	500	6265638*LLG
L-shaped	38	156	ABS	individually packed	500	6265639*LLG
T-shaped	34	140	ABS	50 x 10 bags	500	6265640*LLG
T-shaped	34	140	ABS	individually packed	500	6265641*LLG
Delta-shaped	30	208	PP	100 x 10 bags	1000	6265642*LLG

Inoculating Turntable



Manually operated turntable guarantees smooth and easy rotation in both directions. Also enables easy and fast allocation of bacteria across petri dish surface. Double-sided construction accommodates petri dishes from 60 to 150 mm diameter by inverting the turntable. Ball bearings provide smooth and effortless spinning, ensuring rapid inoculation steps and extended operation life. Light weight but robust body manufactured from aluminum with non-skid feet. The silicone pad holds the petri dishes firmly and always keeps the dish centered during inoculation steps. The non-skid pad can easily be removed for fast and efficient cleaning.

Description	PK	Cat. No.
Inoculating Turntable	1	6286850*LLG

LLG-Inoculation loops, sterile

STERILE



High Quality



Uniform surface wetting and complete transfer of the liquid. The inoculation loops are available as more rigid versions (PS) or flexible versions (HIPS). Smooth edges ensure gentle agar treatment.

- Ethylenoxid sterilized
- Colour coded
- Hexagonal handle for easy handling
- Length: 173 mm
- Package contents: 50 bags of 20 pieces

Capacity µl	Material	Colour	PK	Cat. No.
1	PS	transparent	1000	6290917*LLG
10	PS	green	1000	6290918*LLG
1	HIPS	yellow	1000	6290919*LLG
10	HIPS	white	1000	6290920*LLG

LLG-Disposable Plastic Cells, PS

- Cavity sorted
- Glass clear polystyrene (PS)
- Applicable wavelength range 340 nm to 900 nm
- Very low variation of extinction values
- Excellent optical transmission range
- Styrofoam racks: 100 cuvettes in a styrofoam box with cover



Description	Capacity ml	Path length mm	Operating range nm	PK	Cat. No.
Macro	4.0	10	340 to 900	100	9406011*LLG
Semi-micro	1.6	10	340 to 900	100	9406012*LLG

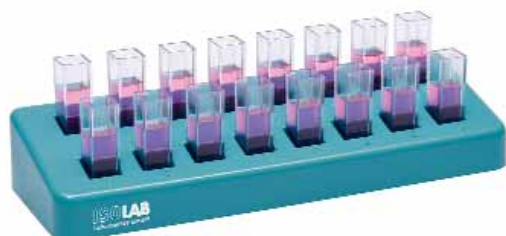
Cuvette Rack with attached lid, PP



For safe handling and holding up to 12 cuvettes with a 10 mm light path. These racks consist of hinged lids with secure clasps and removable inserts for easy cleaning.

Description	PK	Cat. No.
Cuvette rack with attached lid	1	6267353*LLG

Cuvette Rack, PP



For safe handling and holding of 16 spectrophotometer cuvettes with 10 mm width. Alphanumeric index on cuvette rows enables easy identification of tube positions. 2 tier body form offers clear visibility option from horizontal direction. Autoclavable (121 °C).

Length mm	Width mm	Height mm	PK	Cat. No.
210	70	35	1	6286844*LLG

Scanning Spectrophotometers Series 72, VIS and UV-Vis



Scanning Spectrophotometer with Diode Array Technology



Scanning spectrophotometers from Jenway for measurements in the visible and UV range.

Model 7200 (VIS): wavelength range of 335 to 800 nm with a spectral bandwidth of 7 nm.

Model 7205 (UV-VIS): wavelength range of 198 to 800 nm with a spectral bandwidth of 5 nm.

The 72 series spectrophotometers offer measurement modes for single wavelength with basic absorbance and % transmittance; concentration determination, full spectrum scanning and kinetics for up to 3 simultaneous wavelength measurements.

- Scanning diode array detector (DAD)
- Colour Touchscreen navigation on 4" Display
- Small footprint and lightweight
- Fast scan speed
- Also for measurements in test tubes
- 2 year warranty on the instrument

Specifications

Optical system:	Single beam
Wavelength Range:	
7200 (VIS):	335 to 800 nm
7205 (UV-VIS):	198 to 800 nm
Resolution:	±2 nm
Repeatability:	±2 nm
Spectral bandwidth:	
7200 (VIS):	7 nm
7205 (UV-VIS):	5 nm
Light source:	
7200 (VIS):	Tungsten halogen lamp
7205 (UV-VIS):	Xenon Lamp
Outputs:	2 x USB
Dimension (W x D x H):	212 x 422 x 120 mm
Weight:	2.8 kg
Power supply:	100-240 V, 50/60 Hz
Warranty:	2 Years

Description	PK	Cat. No.
Spectrophotometer 7200 (VIS)	1	6283459*LLG
Spectrophotometer 7205 (UV-VIS)	1	6286777*LLG

LLG-Electrode Stand for 3 electrodes



With cable duct. For three electrodes, 3 opening with diam. 16 mm. Additional opening for temperature sensor. Three joints for high flexibility and adjustment options.

Base plate:	105 x 125 mm
Base plate weight:	0.7 kg
Arm weight:	0.1 kg
Max. arm height:	320 mm

Type	PK	Cat. No.
LLG-Electrode stand	1	6286248*LLG

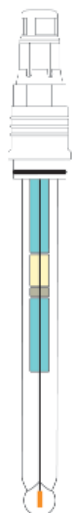
pH Combination Electrodes with gel electrolyte

SI Analytics

Low-maintenance pH combination electrode for use in water management and process chemistry. Not refillable.

- With glass shaft and Silamid® reference
- Gel electrolyte with visible KCl reserve
- With factory test certificate 2.1 for pressure and temperature resistance

Scope of delivery: Electrode with screw plug head (Pg 13.5 installation thread), HD seal, connection cable.



Specifications	
Temperature range:	-5 ... 80 °C
Pressure range	1 ... 12 bar
pH range:	2 ... 12
Length/diam.:	120 mm/12 mm
Electrolyte:	Gel
Diaphragm:	Ceramic
Membrane shape:	Sphere
Membrane resistance at 25 °C:	30 MΩ

Type	PK	Cat. No.
L7781 HD	1	7070780*LLG

pH-Electrodes, BlueLine, not refillable

SI Analytics



Established Quality

Low-maintenance pH combination electrode with plastic body, Ag/AgCl reference system. With fixed cable, length 1 m (BlueLine 24 pH IDS 1.5 m). BlueLine 22 pH with plug head (LB 1A or LB 1BNC cable combination please order separately).

Specifications

Temperature range:	-5 to 80 °C
pH range:	0 to 14 pH
Zero point:	pH=7.0 ±0.3
Length/diam.:	120/12 mm
Electrolyte:	Gel
Diaphragm:	Fibre
Membrane shape:	Cylindrical
Membrane resistance at 25 °C:	400 MΩ

Type	Temperature sensor	Connector	PK	Cat. No.
BlueLine 22 pH	-	Plug head	1	9041147*LLG
BlueLine 24 pH	NTC 30 kΩ	DIN + Banana	1	9041149*LLG
BlueLine 28 pH	Pt 1000	DIN + Banana	1	7075024*LLG



pH Electrodes BlueLine, refillable

SI Analytics



Established Quality

pH combination electrode with glass body, Ag/AgCl reference system. With fixed cable, length 1 m (BlueLine 14 pH IDS 1.5 m). BlueLine 11 pH with screw head (LB 1A or LB 1BNC cable combination please order separately).

Specifications

Temperature range:	-5 to 100 °C
pH range:	0 to 14 pH
Zero point:	pH=7.0 ±0.3
Length/diam.:	120/12 mm
Electrolyte:	Liquid, KCl 3 mol/l
Diaphragm:	Platinum
Membrane shape:	Conical
Membrane resistance at 25 °C:	250 MΩ
Refill hole cover:	Slide

Type	Temperature sensor	Connector	PK	Cat. No.
BlueLine 11 pH	-	Plug head	1	9041140*LLG
BlueLine 12 pH	-	DIN	1	9041141*LLG
BlueLine 14 pH	NTC 30 kΩ	DIN + Banana	1	9041143*LLG



LLG-pH-Buffer Solutions with colour coding



- Accuracy ± 0.01 pH
- With Certificate of Analysis



The ready-to-use buffer solutions offer excellent quality, precision and advantages in use. The calibration vessel, integrated into the twin-neck dispensing bottles, allows the particularly economical dispensing of solution and prevents contamination.

Features

- Accuracy ± 0.01 pH, tested and certified at 25 °C
- Temperature dependence data table printed on the label
- Traceable to NIST
- Shelf-life: 24 months (pH 7 and 10) or 36 months (pH 4)
- from date of production
- Colour-coded

Capacity	Colour	pH-value	PK	Cat. No.
ml		at 25 °C		
250	red	4.00	1	9040868*LLG
250	yellow	7.00	1	9040869*LLG
250	blue	10.00	1	9040871*LLG

LLG-Universal Indicator Strips, in vial with snap lid "Premium"



Single Hand Use

Flip-top vial is easy to open and close with one hand. The new LLG pH strips offer the utmost convenience and ease of use in laboratory-grade testing. With a single colour match and a 12 mm reagent pad, these universal pH strips (0.0-14.0) belong in every lab.

- pH measuring range: 0 - 14.0
- 12 mm matching area for quick matches,
- Flip-top vial stays closed when dropped, but is easy to open with one-hand
- Vial keeps strips safe from the elements
- 1 pack (vial) of 100 strips

Range	Package contents	PK	Cat. No.
pH	0 - 14	100 strips per vial with snap lid	100 9129808*LLG

Universal Indicator Paper Tritest L



For determination of pH value. Roll length 5 m, 14 mm width. With 3 colour zones and 2 hydrophobic zones. The zones are separated by a hydrophobic barrier, which effectively prevents mixing of the reaction colours and increases mechanical stability. Plastic container with 1 roll of indicator paper and colour scale.

Description	Range	PK	Cat. No.
Dispensing reel with 1 roll	pH 1 - 11	1	9130360*LLG

Special Indicator Paper



For determination of pH value. Plastic dispensing reel with 1 roll of indicator paper and colour scale.

Description	Range	PK	Cat. No.
Roll 5 m	pH 5.5 - 9.0	1	9130325*LLG
Further indicator papers available on request.			

Heating Circulator Bath DYNEO™ DD



NEW



With Bath Cover



DD-BC6



DD-BC26.D

For internal and external applications. With powerful components and a large, easy-to-read coloured TFT display. Operation is simple and intuitive via the central controller on the front of the device. Equipped with USB interface and with additional analogue (extra code A) or RS232 (extra code D) interface.

- Easy switching between internal and external circulation
- Integrated cooling coil for counter-cooling
- Built-in drain tap
- Integrated programmer
- Class III (FL) acc. to DIN 12876-1
- Continuously adjustable, powerful pressure pump
- Pump connections M16x1 (outer thread)
- External Pt100 sensor connection

Specifications

Operating temperature range:	20 ... 200 °C
Temperature stability:	0.01 °C
Heating capacity:	2 kW
Flow rate:	22 l/min
Pump capacity:	0.6 bar
Power supply:	200-230 V, 50/60 Hz

2 hose connectors for 8 and 12 mm I.W. and bath lid included.

Type	Capacity	Bath opening	Bath tank depth	Weight	PK	Cat. No.
	L	mm	mm	kg		
DD-BC4	3.0 - 4.5	130 x 150	150	8.50	1	4663221*LLG
DD-BC6	4.5 - 6.0	130 x 150	200	9.70	1	4663222*LLG
DD-BC12	8.5 - 12.0	220 x 150	200	11.90	1	4663223*LLG
DD-BC26	19.0 - 26.0	260 x 350	200	18.70	1	4663224*LLG
DD-BC4.A	3.0 - 4.5	130 x 150	150	8.50	1	4663234*LLG
DD-BC6.A	4.5 - 6.0	130 x 150	200	9.70	1	4663235*LLG
DD-BC12.A	8.5 - 12.0	220 x 150	200	11.90	1	4663236*LLG
DD-BC26.A	19.0 - 26.0	260 x 350	200	18.70	1	4663237*LLG
DD-BC4.D	3.0 - 4.5	130 x 150	150	8.50	1	4663247*LLG
DD-BC6.D	4.5 - 6.0	130 x 150	200	9.70	1	4663248*LLG
DD-BC12.D	8.5 - 12.0	220 x 150	200	11.90	1	4663249*LLG
DD-BC26.D	19.0 - 26.0	260 x 350	200	18.70	1	4663250*LLG

Floating Tube Racks, PE

Polyethylene foam. Resistant to water absorption so racks can be washed and reused. Ideal for floating tubes in water baths, tubs, or beakers. Racks include detachable carrying handles, to lift samples out of baths easily.



Type	For tubes	Colour	Array	PK	Cat. No.
	ml				
Diamond	50	green	4	5	6238546*LLG
Parallelogram	15	blue	8	5	6238547*LLG
Rectangle	1.5 to 2.0	yellow	24	5	6238545*LLG
Round	0.2/0.5/1.5 to 2	blue	18	5	6240378*LLG



Incubation and Inactivation Bath



- Large Colour Display
- Short Heating Times



Water Baths in different sizes with stainless steel interior, lid, and integrated drain cock. Menu-guided operation and control via large, high-contrast TFT colour display. Direct heating system for short heat-up times.

- 3 application-specific timer functions
- Visual and acoustic alarms
- Process-specific temperature adjustment
- 2 independent over-temperature cut-outs
- Specially designed lid prevents dripping back of condensate
- Type 1112/1113 with rotary magnet circulation system
- Compatible with existing accessories

Specifications

Operating temperature range:

Operating temperature range type 1112/1113:

Temperature accuracy at 50 °C:

Power supply:

RT + 5 ... 100 °C

RT + 10 ... 100 °C

±0.1 K

230 V, 50 ... 60 Hz



Type	Capacity	Bath opening	Height of the work area	Dimensions (W x D x H)	Heating capacity	PK	Cat. No.
	L	mm	mm	mm	W		
1102	8	245 x 200	165	340 x 395 x 275	1.0	1	4663369*LLG
1103	16	400 x 245	165	500 x 400 x 275	1.5	1	4663370*LLG
1104	24	600 x 245	165	700 x 400 x 275	1.5	1	4663371*LLG
1105	41	410 x 296	335	510 x 490 x 465	1.5	1	4663372*LLG
1108	22	400 x 245	225	500 x 440 x 345	1.5	1	4663373*LLG
1112	8	245 x 200	165	340 x 395 x 345	1.0	1	4663374*LLG
1113	16	400 x 245	165	500 x 440 x 345	1.5	1	4663375*LLG

LLG-Floating Pellets, PP

Pellets with 20 mm diameter. Can cover 0.1 m².

Protect against evaporation and rapid temperature loss.

Decreases hazardous vapors. Resistant against most acids, bases, solvents and mineral oils.

Temperature stable up to +100 °C.



Description	PK	Cat. No.
LLG-Floating pellets	250	6266611*LLG

Control Seals for sampling, close-it

close-it is an aluminium-backed, vapour-proof adhesive label with extremely strong adhesion. Sacks, boxes etc. which have been pierced with samplers can be hermetically resealed. They can even adhere to slightly moist or dusty sacks coated with fine powders, e.g. plaster, flour etc.

close-it food & pharma ensures the necessary success when resealing sample openings, as it reliably prevents products from escaping after sampling. The adhesive complies with the European guidelines for foodstuffs. Just like the original, close-it food & pharma has a barrier layer of aluminium foil, which makes the close-it food & pharma perfectly suited to sampling foodstuffs, pharmaceuticals, cosmetics, food additives - any applications in which the product must not be contaminated by contact with the adhesive.



Type	Description	Colour	PK	Cat. No.
close-it	Printed, 95 x 95 mm	Red	500	9303910*LLG
close-it	Printed, 95 x 95 mm	Green	500	9303911*LLG
close-it	Printed, 95 x 95 mm	Blue	500	9303913*LLG
close-it	Printed, 95 x 95 mm	Black	500	9303914*LLG
close-it	Plain, 95 x 95 mm	White	500	9303915*LLG
close-it Maxi	Printed, 150 x 150 mm	Red	250	9303980*LLG
close-it Maxi	Plain, 150 x 150 mm	White	250	9303985*LLG
close-it food & pharma	Printed, 95 x 95 mm	Blue	500	9303997*LLG
close-it food & pharma Maxi	Printed, 150 x 150 mm	Red	250	9303990*LLG

Whirl-Pak® Sample Bags, PE, sterile, free standing

STERILE



The Whirl-Pak® Stand-Up Bags make sample handling and testing much easier. They give users the ability to perform important laboratory functions with both hands, because the bag will stand completely by itself. No rack or other holder is needed to keep the bag upright. When the sample is placed inside, the specially gusseted bottom flattens out, allowing the bag to stand up on its own. It works just like a beaker or bottle, however, it costs less, is sterilized, won't break, and uses only a fraction of the storage space the other containers would occupy. The white, easy-to-write-on strip makes sample identification easier and more convenient. Bags should not be used at temperatures above 82 °C. Bags can be frozen to any temperature, even liquid nitrogen temperatures down to -210 °C - careful handling required after freezing.

Nasco

Description	Filling volume approx ml	Dimensions (D x W) mm	Thickness mm	PK	Cat. No.
with label, free standing	532	115x230	0.076	500	9404232*LLG

Whirl-Pak® Sample bags, PE, sterile

STERILE

Whirl-Pak® bags are sterile polyethylene laboratory sample bags used to transport samples for biological testing and other applications. Available with or without write-on strip. Bags should not be used at temperatures above 82 °C. Bags can be frozen to any temperature, even liquid nitrogen temperatures down to -210 °C - careful handling required after freezing.



Nasco

Description	Filling volume approx ml	Dimensions (D x W) mm	Thickness mm	PK	Cat. No.
with label	58	75 x 125	0.057	500	7058005*LLG
with label	118	75 x 185	0.057	500	7077212*LLG
with label	532	115 x 230	0.064	500	7058120*LLG
with label	710	150 x 230	0.076	500	6242083*LLG
with label	5441	380 x 508	0.102	100	6257989*LLG
without label	58	75 x 125	0.057	500	6091055*LLG
without label	710	150 x 230	0.076	500	6228639*LLG
without label	2041	190 x 380	0.076	500	6305117*LLG

Multi-Purpose Beakers, PP



Transparent, pressure-resistant and unbreakable sample cup, ideal for collecting and storing samples of all types. Can be ordered with and without screw cap.

- Graduated
- Solid and stable
- Writing field on the cup and labeling area on the lid
- Wide opening for easy and safe filling
- Fluid tight sealing screw cap with thread

Description	PK	Cat. No.
Beaker 125 ml, PP, with screw cap, green, HDPE	500	6238122*LLG
Beaker 125 ml, PP, without screw cap	1000	6237981*LLG
Screw lid, green, HDPE	1000	6237982*LLG

Disposable Samplers DispoSampler, PE-HD



In numerous situations, rapid and contamination-free samples must be taken. DispoSamplers are ideal for this application. They are cleanroom-manufactured, individually-packed and ready-to-use. Avoid expensive decontamination or cleaning of soiled samplers. Gamma-sterilised versions are also available.

ViscoDispo:

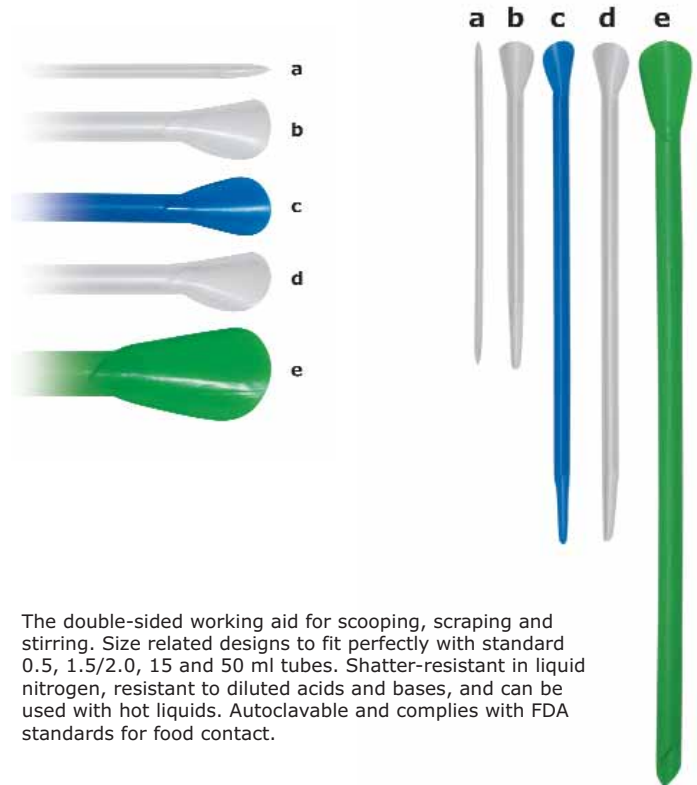
For high viscosity-media up to 100.000 mPas.

LiquiDispo:

For liquids and slightly viscous media.

Type	Sterile	Capacity	Length	PK	Cat. No.
		ml	mm		
ViscoDispo	-	100	500	20	9303732*LLG
ViscoDispo	-	200	1000	20	9303734*LLG
LiquiDispo	-	100	500	20	9303720*LLG
LiquiDispo	+	100	500	20	9303721*LLG

Powder Spatula smartSPATULAS®, PP



The double-sided working aid for scooping, scraping and stirring. Size related designs to fit perfectly with standard 0.5, 1.5/2.0, 15 and 50 ml tubes. Shatter-resistant in liquid nitrogen, resistant to diluted acids and bases, and can be used with hot liquids. Autoclavable and complies with FDA standards for food contact.

For tubes	Description	Colour	Diam.	Length	Figure	PK	Cat. No.
ml			mm	mm			
0.2	Micro Antistatic	Natural	3.5	140	a	300	6256896*LLG
15/1.5/2.0	Standard	Blue	7.0	210	c	300	6256893*LLG
15/1.5/2.0	Standard	Natural	7.0	210	d	300	6256895*LLG
50	Macro	Green	1.0	310	e	150	6256897*LLG

Dispensing Scoops, stainless steel



Remanit® 4301

Capacity	Diam.	Length	Overall	PK	Cat. No.
ml	mm	Scoop mm	length mm		
120	50	100	190	1	9201219*LLG
450	75	145	250	1	9201222*LLG
1000	105	190	320	1	9201232*LLG
1500	120	240	350	1	9201235*LLG

Mini Centrifuges LLG-uniCFUGE 2 and LLG-uniCFUGE 2/5



- Compact and Inexpensive
- 2 Speeds and 2 Rotor Types



LLG-uniCFUGE 2



LLG-uniCFUGE 2/5

A compact and reasonably priced mini centrifuge with two rotor types. Speed can be adjusted to 4000 rpm or 6000 rpm. Powerful motor for fast starting. Quick stop when the lid is opened.

LLG-uniCFUGE 2 with **Universal rotor** for 6 x 1.5/2.0 ml and 6 x 0.5 ml tubes and 2 times 8 x 0.2 ml PCR-strips.

LLG-uniCFUGE 2/5 with **rotor for 4 x 5 ml tubes**.

Specifications

Max. RCF:	1200 xg and 2000 xg
Max. speed:	4000 rpm and 6000 rpm
Max. load:	6 x 0.5/1.5/2 ml and 2 x 8-tube PCR strips (0.2 ml) // 4 x 5 ml tubes
Dimensions (diam. x H):	140 x 120 mm
Weight:	0.7 kg
Power supply:	100 - 240 V, 50/60 Hz, 1 A

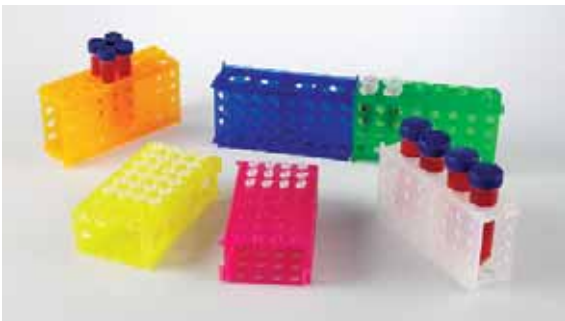
Description	PK	Cat. No.
LLG-uniCFUGE 2 with universal rotor with EU-plug	1	6263510*LLG
LLG-uniCFUGE 2 with universal rotor with UK-plug	1	6263511*LLG
LLG-uniCFUGE 2/5 with rotor for 5 ml Tubes with EU-plug	1	6263515*LLG
LLG-uniCFUGE 2/5 with rotor for 5 ml Tubes with UK-plug	1	6263516*LLG

Microtube Racks, PP, 4-Way



Racks feature a unique system of tabs and slots, which facilitate easy assembly and sturdy fit to build as large as rack as you need. Heavy-duty polypropylene racks can hold 4 x 50 ml or 12 x 15 ml conical tubes, 32 x 1.5 ml or 32 x 0.5 ml microtubes. Autoclavable. Dimensions (L x W x H): 175 x 95 x 51 mm.

Colour	PK	Cat. No.
Natural	1	9409131*LLG
Blue	1	9409132*LLG
Green	1	9409133*LLG
Pink	1	9409134*LLG
Yellow	1	9409135*LLG
Orange	1	9409136*LLG
Blue, green, pink, yellow, orange	5	9409137*LLG





Centrifuge Tubes for your Laboratory

LLG-Centrifuge Tubes, 5ml, PP



The LLG-Centrifuge tubes represent the perfect solution for all laboratory applications requiring incubation, centrifugation and sample handling for intermediate volume ranges. The LLG centrifuge tubes are available in clear, and amber for use with light sensitive samples, and as an assorted colour pack (green, blue, yellow and red).

- Max. 25.000 x g, suitable for high speed centrifugation
- Graduations every 0.25 ml for easy volume estimation
- A flat, frosted cap and large writing pad for sample labeling and identification
- Autoclavable
- Fits all rotors and racks that hold 15 ml conical tubes, no adapters needed
- Certified free of RNase and DNase

Description	Package contents	PK	Cat. No.
Clear	1 bag of 250 pieces	250	6281113*LLG
Amber	1 bag of 250 pieces	250	6281115*LLG
Colour assortment	4 bags of 50 pieces green, yellow, red, blue (1 colour per bag)	200	6281114*LLG

LLG-Microcentrifuge Tubes, PP



LLG Microtubes cover standard volumes for a variety of sample tests. They are available in 0.5 ml, 1.5 ml and 2.0 ml volumes. These standard Microtubes withstand high centrifugal forces, are temperature and chemically-resistant and guaranteed leak-free. An innovative and modern new generation of Microtubes with new features. Perfect sealing qualities, excellent chemical stability and optimal construction materials guarantee even better resistance to centrifugal and chemical forces. Easy to open and to close thanks to the improved lid geometry. For visual volume control the 1.5ml tubes are equipped with graduations at 0.5 ml, 1.0 ml and 1.5 ml. The 2.0 ml tubes have graduations at 0.5 ml, 1.0 ml, 1.5 ml and 2.0 ml. The 0.5 ml tubes have no graduations. Certified DNase-, RNase- and pyrogen free.

Clear, in bags. Suitable for microbiology. Guaranteed metal-free.

Specifications

Autoclavability

Temperature:	121 °C (250 °F)
Pressure:	1.05 bar or 15 psi
Time:	20 min or less

Centrifugation

Fixed angle rotor:	25000 x g
Swing out rotor:	70000 x g

Form	Volume	PK	Cat. No.
	ml		
conical	0.5	1000	9409023*LLG
conical	1.5	1000	9409024*LLG
round	2.0	1000	9409025*LLG

LLG-Centrifuge Tubes economy, PP



- With flat PE caps
- With conical bottom (15 and 50 ml) or with self-standing bottom (50 ml)
- Easy-to-read black volume graduations
- With a large frosted writing area
- Engraved graduation at the conical bottom of each tube
- Max rotate speed up to 12.000 x g for conical bottom tubes and 6.000 x g for self-standing tubes
- Autoclavable at 121 °C and freezable to -80 °C
- Leak-proof
- Free of heavy metals, pyrogens and endotoxins
- DNase/RNase-free
- Bulk packed

Form	Capacity	Height	PK	Cat. No.
	ml	mm		
conical	15	119.6	500	6270403*LLG
conical	50	113.9	500	6270404*LLG
with rim	50	116.5	500	6270405*LLG



Heating Ovens, ED, FD, FED series - Avantgarde.Line



- **Great Temperature Accuracy**
- **Established Quality**

The drying chambers with natural convection or forced convection are renowned due to their design, convenient operation and efficiency. The APT.line™ technology offers outstanding temperature accuracy.

Equipment:

- Temperature range series ED: room temperature plus 5 °C to 300 °C with natural convection
- Temperature range series FD, FED: room temperature plus 10 °C to 300 °C with forced convection
- Controller with LCD display
- Electromechanical control of the exhaust air flap
- 2 chrome-plated racks included
- Class 2 independent temperature safety device (DIN 12880) with visual temperature alarm
- USB port for recording data



Type	Internal dimensions (W x D x H) mm	External dimensions (W x D x H) mm	Temp. range °C	PK	Cat. No.
ED 56	360 x 380 x 420	560 x 565 x 625	RT + 5 ... 300	1	4658061*LLG
ED 115	510 x 425 x 530	710 x 605 x 735	RT + 5 ... 300	1	4658059*LLG
ED 260	610 x 550 x 760	810 x 760 x 965	RT + 5 ... 300	1	6280292*LLG
FD 56	400 x 345 x 440	560 x 565 x 625	RT + 10 ... 300	1	6280069*LLG
FD 115	550 x 385 x 550	710 x 605 x 735	RT + 10 ... 300	1	4658060*LLG
FD 260	650 x 515 x 780	810 x 760 x 965	RT + 10 ... 300	1	6280362*LLG
FED 56	400 x 345 x 440	560 x 565 x 625	RT + 10 ... 300	1	6280295*LLG
FED 115	550 x 385 x 550	710 x 605 x 735	RT + 10 ... 300	1	6280284*LLG
FED 260	650 x 515 x 780	810 x 760 x 965	RT + 10 ... 300	1	6280296*LLG

Drying Oven 125 control dry

IKA®



NEW

Powerful drying cabinet with rapid heating and exact temperature regulation guarantees reproducible results. Thanks to its high-quality insulation, the device has a very large interior of 125 litres in relation to its total volume. This structure also reduces odour emissions, operating costs, and ensures excellent temperature uniformity.

- With recirculating air up to 300 °C
- Electronically adjustable ventilation
- Key lock function
- Timer from 1 minute up to 100 days
- Adjustable temperature limit
- USB Interface
- Fits up to 6 shelves
- Interior made of stainless steel
- Door opening possible up to max. 180°
- Recirculating air-drying cabinet with automatic fan switch-off
- Recirculating air adjustable in 10 steps
- Real-time clock
- Temperature selection limited TWB (DIN 12880)
- Illuminated interior
- Cable bushing at the rear for measuring inside the oven
- RS 232 Interface
- Direct saving of data on USB stick
- Interface for additional temperature sensor (display and control possible)
- 2 large TFT Displays

Scope of delivery: Oven with 2 shelves and factory calibration certificate at 160 °C



Specifications

Internal volume:	125 litre
Ambient temperature:	5 ... 40 °C
Working temperature:	RT+ 5 ... 300 °C
Adjustment and display resolution:	0.1 K
Temperature stability (150 °C):	±0.3 K
Ambient humidity:	80 %
Heating power:	2400 W
Outer Dimensions (W x D x H):	700 x 650 x 825 mm
Inner Dimensions (W x D x H):	550 x 525 x 450 mm
Weight:	82 kg
Power supply:	230 V, 50/60 Hz
Protection class:	IP 20

Type	PK	Cat. No.
Oven control dry	1	4663261*LLG
Oven control dry - glass	1	4663262*LLG

Aluminium Containers, round



Capacity ml	Top diam. mm	Bottom diam. mm	Fill height mm	PK	Cat. No.
28	64	51	13	100	9106240*LLG
110	80	56	34	100	9106241*LLG
110	99	70	25	100	9106242*LLG
125	96	78	24	100	9106261*LLG
280	114	58	50	50	9106263*LLG

Molecular Model System Molymod®



The Molymod® system is a unique system of high quality molecular models. The set consists of a variety of atom parts and links designed to make a large number of possible structures relevant to a specific chemistry subject or use, e.g. Biochemistry, Organic or Inorganic. All sets are fully compatible. Atom parts are made of solid clouded plastic spheres. They are available with holes from 1 to 6 in the usual angular orientations.

Type	Description	PK	Cat. No.
Introductory Set	48 atoms, 62 links	1	9883101*LLG
Organic Set, large	111 atoms, 140 links	1	9883103*LLG
Biochemistry Set, large	257 atoms, 160 links	1	9883107*LLG
Organic Set, small	50 atoms, 64 links	1	9883108*LLG
Inorganic/Organic Set, small	51 atoms, 38 links	1	9883109*LLG
Inorganic/Organic Set, large	106 atoms, 86 links	1	9883104*LLG

Aluminium Containers, square, with lid



Capacity ml	Dimensions top (D x W) mm	Dimensions bottom (D x W) mm	Fill height mm	PK	Cat. No.
250	128 x 103	93 x 67	34	100	6226802*LLG
500	191 x 127	156 x 92	29	60	9106266*LLG

Laboratory Trays LaboPlast®, PP



White multi-purpose trays. Injection-moulded. Durable and resist flexing, with strong, rounded rim. Stackable and hygienic. Polished surface is easy-to-clean. Resistant to many acids and alkaline solutions. Food-safe.

Dimensions (W x D x H) mm	Internal dimensions mm	PK	Cat. No.
230 x 180 x 42	130 x 180	1	9200203*LLG
310 x 250 x 65	180 x 240	1	9200204*LLG
370 x 310 x 75	240 x 300	1	9200205*LLG
520 x 420 x 120	300 x 400	1	9200206*LLG
634 x 534 x 140	400 x 500	1	9200207*LLG
846 x 648 x 160	500 x 700	1	9200208*LLG

Pioneer® PX analytical balances



- **Introductory Price**
- **The Affordable Solution for Simple Weighing Applications**

High-performance, economical scales with high accuracy and repeatability for applications in laboratories, industry and education. With robust cast metal lower housing, removable stainless-steel weighing pan and intuitive operation. For basic weighing, parts-counting, percent weighing, dynamic weighing and density determination.



- 2-line, backlit LCD display
- 4 quick keys enable the most common weighing modes
- Wind shield
- USB and RS 232 interface for data exchange with PCs and PLCs
- User-selectable span calibration points
- Real-time clock with GLP/GMP data
- Integrated weigh-below-hook
- Models with internal and external calibration available
- Auto-tare
- Many weighing units selectable, a custom unit can be defined
- Models with removable draft shield with static removal bar made from ABS
- Overload, underload and stability indicator
- 4 menu languages



Product Video

Specifications

Permissible ambient temperature range:	10 ... 30 °C
Dimensions (W x D x H):	209 x 309 x 321 mm
Weight:	4.5 kg
Power supply:	100 ... 240 V/50 ... 60 Hz



Type	Plate diam. mm	Weighing range g	Readability	Reproducibility g	Linearity ± g	PK	Cat. No.
Pioneer® PX85	80	82	0.00001 g	0.00002	0.0001	1	4663322*LLG
Pioneer® PX124	90	120	0.0001 g	0.0001	0.0002	1	4663327*LLG
Pioneer® PX224	90	220	0.0001 g	0.0001	0.0002	1	4663330*LLG
Pioneer® PX323	120	320	0.001 g	0.001	0.002	1	4663333*LLG
Pioneer® PX523	120	520	0.001 g	0.001	0.002	1	4663336*LLG

Cleanroom-Swabs



Cleanroom Swabs with polypropylene shaft and rounded head made of almost particle-free polyurethane or polyester.

- Material shaft: PP
- Cleanroom Class: ISO 5

Length	Head size	Material Head	PK	Cat. No.
mm	mm			
125	12.7 x 25	PU-foam	100	4659074*LLG
125	12.7 x 25	Polyester	100	4659075*LLG
162	6.8 x 16.8	PU-foam	100	4659076*LLG
162	6.8 x 16.8	Polyester	100	4659077*LLG
70	4.0 x 12.0	Polyester	100	4659078*LLG
70	3.5 x 11.0	PU-foam	100	4659079*LLG
70	3.5 x 11.0	Polyester	500	4659080*LLG

Cleanroom Wipes ASPURE, Polyester



Extremely low particle number and evaporation residues. Laser-cutting techniques minimise the formation of dust and lint on cutting edges. The use of polyester long fibers prevents the generation of lint.

- Knitted made of 100 % polyester
- Lasercut
- Double packed
- Cleanroom Class: ISO 5

Dimensions	Package contents	PK	Cat. No.
mm			
229 x 229	10 x 150 pieces	150	4659070*LLG

Cleanroom Gloves Niprotect 529, nitrile, powder-free

EN 374 EN 374



- Extra Long Cuff
- Textured Fingertips

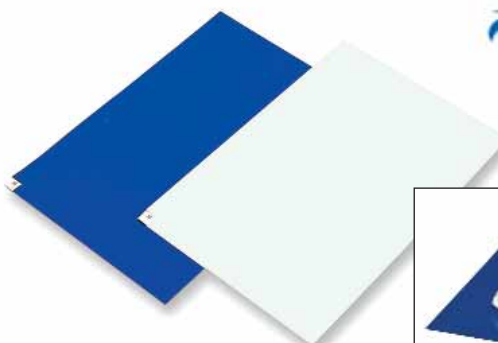
Reinforced mechanical resistance for short-term operations. Length: 30 cm. Thickness: 0.1 mm. Manufacturing process guarantees a very low level of contaminants: rates of particles, non-volatile residue, extractables; compatible with ISO 5 class (Class M3.5 for International system). 100 % nitrile formula enables anti-static properties. Protection against accidental chemical splashes. Recommended for people who are sensitive to the proteins in natural latex. Packaging: 100 gloves/bag

- Cat. III



Size	PK	Cat. No.
6	100	6270501*LLG
7	100	6270502*LLG
8	100	6270503*LLG
9	100	6270504*LLG
10	100	6270505*LLG

Adhesive Mats



If the top adhesive mat is soiled, you can simply remove this layer and work directly on the next one of the stack. The number of remaining mats on the stack is indicated by the number in the corner. 30 layers.

Dimensions (D x W)	Colour	PK	Cat. No.
mm			
450 x 900	blue	10	4659087*LLG
600 x 900	blue	10	4659088*LLG
600 x 1200	blue	10	4659089*LLG
600 x 900	white	10	4659090*LLG
600 x 1200	white	10	4659091*LLG
450 x 900	white	10	4659092*LLG

Overhead Stirrer LLG-uniSTIRRER OH2, digital

Cost efficient laboratory stirrer designed for simple stirring tasks for quantities up to 20 l (H₂O). Automatic speed adjustment in the range between 50 and 2200 rpm via microprocessor-controlled technology. Safety circuits ensure automatic cut-off in an anti-stall or overload situation. Actual and set speed are constantly monitored ensuring no undesired speed variations even if the sample viscosity changes.

- Brushless, maintenance-free motor
- Digital speed display
- **Display for speed or torque changeable**
- Infinitely adjustable speed
- **Overload protection**
- Slim casing
- Quiet operation
- Error code display
- RS232 port

Stand:

Stainless steel stand incl. boss head,
dimension (W x D x H): 200 x 310 x 780 mm

Stirrer:

4-blade propeller stirrer, stainless steel, shaft length 400 mm,
stirrer diameter 50 mm

Scope of delivery: Overhead stirrer LLG-uniSTIRRER OH2,
stand and 4-blade-propeller stirrer.

Specifications

Max. stirring quantity (H ₂ O):	20 l
Speed range:	50 to 2200 rpm
Max. viscosity:	10.000 mPas
Motor rating input/output:	60/50 W
Speed display accuracy:	3 rpm
Max. torque at stirring shaft:	40 Ncm
Display:	LCD
Chuck range:	0.5 to 10 mm
Dimensions (W x D x H):	83 x 186 x 220 mm
Power supply:	110 - 240 V, 50/60 Hz
Protection class:	IP 21

Type	PK	Cat. No.
LLG-uniSTIRRER OH2 with EU-plug	1	6263455*LLG
LLG-uniSTIRRER OH2 with UK-plug	1	6263456*LLG



- **Switchable Display for Speed and Torque**
- **Stirring Volume Up To 20 l**

Beakers Glass, DURAN®, low form



DIN 12331. ISO 3819.

With approximate graduations and spout.

With easy-to-read scale and large labelling field for easy marking, that have been fired-on, highly durable white ceramic. Suitable for use as a heating vessel, due to the uniform wall thickness. Glass Type I/neutral as per USP, EP and JP. With retrace code (Batch Identification, for all) except 5 ml, 10 ml and 25 ml. Certificate available via the Internet. Autoclavable.

Nominal capacity	Diam.	Height	PK	Cat. No.
ml	mm	mm		
25	34	50	1	211061406*SCHOTT
50	42	60	1	211061706*SCHOTT
100	50	70	1	211062402*SCHOTT
150	60	80	1	211062908*SCHOTT
250	70	95	1	211063604*SCHOTT
400	80	110	1	211064103*SCHOTT
600	90	125	1	211064806*SCHOTT
1000	105	145	1	211065408*SCHOTT
2000	132	185	1	211066301*SCHOTT

Temperature Measurement

Digital Pocket Thermometer TDC 200



-ebro-
a xylem brand

- Measuring range -50 °C to +300 °C
- Large Display and Visual Alarm

- Large illuminated display
- Adjustable limit values; visual and acoustic alarm
- Hold- and auto-off function
- Exchangeable probe
- Fixed probe, pointed
- Exchangeable batteries



Special Price !

Specifications

Accuracy: $\pm 0.8\text{ °C}$ or $\pm 0.8\%$,
with the bigger value being applicable

Operating Temperature: -20 °C ... 50 °C

Resolution: 0.1 °C

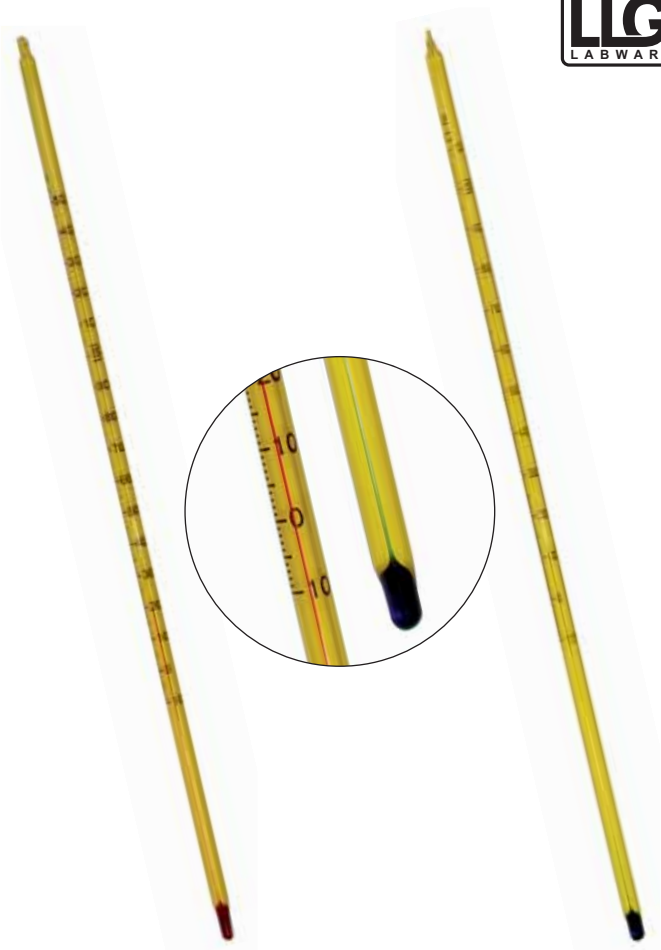
Power Supply: 2 x type AAA (incl.)

Protection class: IP 65 (DIN EN 13485)

Temperature probe: Needle diam. 3 to 6 mm,
length 100 mm

Type	PK	Cat. No.
TDC 200	1	9908028*LLG

LLG-General Purpose Thermometers *economy*



Solid stem, with loop, capillary yellow enameled,
graduation resistant against acids and alkalis.
Red filling or environmentally friendly blue filling.

- diam. x length: 6 x 300 mm

Charge colour	Immersion depth	Measuring range °C	Graduations °C	PK	Cat. No.
red	total	-10 ... +50	1	1	9237010*LLG
red	total	-10 ... +100	1	1	9237011*LLG
red	total	-10 ... +150	1	1	9237012*LLG
red	total	-10 ... +200	1	1	9237013*LLG
red	total	-10 ... +250	1	1	9237014*LLG
blue	76 mm	-10 ... +110	0.5	1	9237016*LLG
blue	76 mm	-10 ... +150	1	1	9237017*LLG
blue	76 mm	-10 ... +360	2	1	9237019*LLG

Plastic Sleeves for laboratory thermometers



For safe storage of laboratory thermometers.

For	PK	Cat. No.
Ø 6-7 mm, length 200-380 mm	10	4663956*LLG
Ø up to 9 mm, length 200-380 mm	10	4663955*LLG
Ø up to 11 mm, length 250-450 mm	10	4663954*LLG



Turbidity Meter AL250T-IR



The compact Aqualytic® infrared turbidity meter AL250T-IR is designed to allow fast, precise on-site testing. Wide measuring range from 0.01 to 1.100 TE/F = NTU = FNU. Infrared measurements for coloured or colourless liquids.

- measuring ranges from 0.01 to 1.100 NTU (auto range)
- measurement with infrared light at an angle of 90°
- easy operation
- 600 tests between battery charges
- EN ISO 7027

Scope of supply: AL250T-IR turbidity meter as described above, complete with 4 turbidity standards <0.1, 20, 200 and 800 NTU, battery and case.

Specifications

Measurement cycle:	approx. 9 seconds
Display/Function:	LCD
Optics:	temperature-compensated LED and photosensor amplifier in waterproof sample chamber
Measuring range:	0.01 to 1.100 NTU (autorange)
Housing:	ABS
Dimensions (L x W x H):	190 x 110 x 55 mm
Weight (Basis unit):	approx. 0.4 kg
Temperature:	0 to 40 °C
Humidity (rel.):	30 to 90 % R.H.
CE-conformity:	DIN EN 50081-1, VDE 0839 part 81-1:1993-03, DIN EN 50082-2, VDE 0839 part 82-02:1996-02

Type	PK	Cat. No.
AL250T-IR	1	9920203*LLG

Sedimentation Cones, accessory stand, Acrylic/PP



Kartell

Acrylic/PP. To hold two Imhoff sedimentation cones. Compact and easy to transport even when fully loaded.

Width	Length	Height	PK	Cat. No.
mm	mm	mm		
150	300	300	1	9304281*LLG

Turbidity Meter TN100



The waterproof Infra-Red Turbidity meter TN100 is easy-to-use.

- IP67 Waterproof and Dustproof, easy cleaning and maintenance
- Automatic Push-Button Calibration (4 points) for unprecedented full-range accuracy
- Power-saving feature allows over 1200 measurements
- Large Easy-to-Read Display for optimum viewing of measurements
- Meets Performance Criteria as specified by ISO 7027 (DIN EN 27027) method

Scope of supply: Turbidity meter with 4 calibration standards, 3 empty cuvettes, sturdy carrying case, batteries and instruction manual

Specifications

Turbidity range:	0 to 1000 NTU
Calibration Points:	4 points (automatic)
Response Time:	< 6 seconds for full step change
Calibration Standards:	0.02 NTU; 20.0 NTU; 100 NTU; 800 NTU
Light Source:	Infrared-emitting diode (850 nm)
Light Source Life:	> 1.000.000 tests
Power supply:	4 x 1.4 V batteries, > 200 h

Type	PK	Cat. No.
Turbidity meter TN100	1	6205327*LLG

Sedimentation Cone, plastic, SAN



Kartell

DIN 12672. Transparent SAN (Styrene acrylonitrile). With screw cap for draining the contents. Temperature-resistant up to max. 85 °C.

Graduations, ml:	Subdivisions, ml
0 to 2	0.1
2 to 10	0.5
10 to 40	1
40 to 100	2
100 to 1000	50

Type	Grad.	PK	Cat. No.
	ml		
With screw cap	up to 1000	1	9304280*LLG

Measuring Cylinders, DURAN®, tall form, class A, blue graduation



HIRSCHMANN®

With spout and hexagonal glass base. With dated batch identification. IN (TD) calibrated. Declaration of conformity acc. to DIN 12600. Graduation in durable blue enamel, according to DIN EN ISO 4788. Batch calibration reports available.

Capacity	Grad.	Tolerance	Height	PK	Cat. No.
ml	ml	± ml	mm		
10	0.2	0.1	140	1	9274181*LLG
25	0.5	0.25	170	1	9274182*LLG
50	1	0.5	200	1	9274183*LLG
100	1	0.5	260	1	9274184*LLG
250	2	1.0	335	1	9274185*LLG
500	5	2.5	390	1	9274186*LLG
1000	10	5.0	470	1	9274187*LLG

Also available with dated batch identification acc. to USP (US Pharmacopeia).

Volumetric Flasks for determination of oil content, SILBERBRAND, Borosilicate glass 3.3



SILBERBRAND®

DIN 51 368. For determination of oil content in aqueous oil emulsions (e.g. drilling oil). With NS19/26, hollow glass stoppers. Graduations and inscriptions in highly contrasting white enamel. Capacity 100 ml, tolerance ± 0.2 ml. Calibrated to contain (IN).

Subdivisions: 0 to 5 ml : 0.1 ml, tolerance: ± 0.1 ml.
Subdivisions: 5 to 30 ml : 0.5 ml, tolerance: ± 0.5 ml.

Sample volume	PK	Cat. No.
ml		
100	1	9276880*LLG

Coloured Wash-Bottles, narrow-neck, PE- LD/PP



VITLAB®
Competence in Labware

Available in four different colours to facilitate ready identification. Screw cap and PP spray tube. Precise spray jet and optimised medium backflow through the continuous and finely drawn tip of the spray tube.

Capacity: 500 ml
Neck thread: GL 25
Height: 180 mm
Diam.: 74 mm

Colour	PK	Cat. No.
red	5	4664278*LLG
green	5	4664281*LLG
yellow	5	4664282*LLG
blue	5	4664283*LLG

LLG-Surface Protector DescProtect



LLG®
LABWARE

DescProtect is a durable paper which quickly absorbs liquid spills. The PE-coated base layer stops liquids reaching the work surface.

- white surface can be written on using pens or pencils
- rapid absorption of liquid spills

Surface protection paper with two layers:

- **Layer 1:** Highly absorbent carrier paper, sucks up spilled toxic or radioactive liquids quickly
- **Layer 2:** Wetness impermeable polyethylene layer, protection for lab workbenches, trays or chemical cabinets
- Additional advantages: impermeable cover in animal cages, ideal in humidity chambers for atmospheric regulation

Type	Size	PK	Cat. No.
Sheets	460 mm x 570 mm	50	9160270*LLG
Spool	400 mm x 50 m	1	9160271*LLG

Dual Short Period Timer TR 118 OS



- Large, 6-digit, LCD readout
- 2 separate timers in one instrument
- Countdown/countup 99 hrs. 59 mins. 59 secs.
- Clock function switch
- Audible alarm sounds when 'zero' reached
- With pocket clip/bench stand and magnet
- Supplied with AAA 1.5 V battery

Dimensions (W x H x D): 73 x 66 x 18 mm
Weight: 63 g

Type	PK	Cat. No.
TR 118 OS	1	9260186*LLG

LLG-Short Period Timer with alarm



Easy-to-use combination timer and stopwatch, with large display and alarm function from/up to 99 min. and 59 sec. With magnet for easy fixing. Battery LR 44 inclusive.

Dimensions (Ø x H): 54 x 16.5 mm
Weight: approx.40 g

Type	PK	Cat. No.
LLG-Short period timer with alarm	1	9260150*LLG

LLG-Timer with White Board, 4 channel



This four-channel timer has a built-in white board that helps keeping track of time and other critical information.

- Audible alarm for each channel
- Built-in white board and dry erase marker with eraser tip (included) helps keep track of crucial information
- Programs: hours/minutes; Displays: hours/minutes/seconds
- Maximum run time: 23 hours: 59 minutes
- Timer accuracy: ±5 seconds/day
- Count direction: up/down; displays elapsed time after countdown
- Last time set memory
- Key-press confirmation feature gives an audible indication of data entry
- Lay flat on a bench, use the flip-open stand for a vertical view, or use the magnetic back for metal surface attachment
- Requires two AAA batteries (included)
- Individually tested, inspected, and calibrated using NIST
- Includes Certificate of Calibration with unique report number, stated corrections and standard used for the calibration, and multi-language instructions (English, French, German, Italian, Portuguese and Spanish)
- CE mark, RoHS compliant

Dimensions (W x D x H): 114.3 x 25.4 x 88.9 mm

Type	PK	Cat. No.
LLG Timer with White Board, 4 channel	1	6266706*LLG

Short Period Timer WB 388



Three separate timers in one instrument. Countdown/countup. Audible alarm sounds when 'zero' reached. 12/24 hour clock. Loud/soft alarm switch.

Dimensions (W x D x H): 83 x 22 x 70 mm
Weight: 80 g

Type	PK	Cat. No.
WB 388	1	9260184*LLG

LABORTOPS

Manual Serial Dispenser LLG-uniDISPENS pro



The **ergonomically designed** manual dispenser LLG-uniDISPENS pro enables single-handed volume selection, loading and dispensing. Due to its lightweight design, it is ideally suited for serial dosing. You can flexibly select your desired dosing volume from **120 dosing programs** for 12 tip sizes and with 10 stroke adjustments. You can view all settings and volumes at a single glance through the viewing window of the manual dispenser. The dispenser is compatible with Ritips[®] from Ritter, PD-Tips[®] from Brand, Combitips[®] and Combitips advanced[®] from Eppendorf[™]. Thanks to a purely mechanical, maintenance-free construction, the manual dispenser is a practical and convenient device for daily laboratory use.

Scope of delivery: Adapter for 25 ml tips included



NEW

- The Bestseller now available as **pro**
- 120 Dosing Programs selectable

Description	PK	Cat. No.
LLG-uniDISPENS pro	1	9284239*LLG

Dispenser tips Ritips[®] evolution

Universal dispenser tips for a variety of steppers. The nine tip sizes are equipped with colour-coded adapters for faster identification.

- Easy, high-precision work even in the low µl range
- Suitable for viscous, infectious and volatile liquids due to direct displacement method
- Tips individually and mechanically tested for safe and repeatable application
- Available in standard and bioclean[®] quality (individually wrapped and sterile)
- bioclean[®] label is certified by accredited laboratories and means sterilized, pyrogen-, ATP-, RNase- and DNA-free
- A batch certificate is available on request
- Lot number on each box

Suitable for Ripette[®], Ripette[®]pro, Ripette[®]genX (Ritter), **LLG-uniDISPENS pro**, eLine[™] Dispenser (Sartorius), Multipette[®]4780, Multipette[®]plus (Eppendorf), Minilab 100, Minilab 101, Minilab 201, Distriman[®] (Gilson), StepMate, EasyStep, EasyStep electronic, RepeatOne[®] (Starlab), Handrop, HandyStep[®], HandyStep[®]S, HandyStep[®]electronic (Brand).

Please note: Dispenser tips 25 ml and 50 ml cannot be used without adapter. If necessary, please order Cat. No. 6.310 203 or 6.310 548 separately.



Type	PK	Cat. No.
0.1 ml / standard	100	6291326*LLG
0.2 ml / standard	100	6291327*LLG
0.5 ml / standard	100	6291328*LLG
1.0 ml / standard	100	6291329*LLG
2.5 ml / standard	100	6291330*LLG
5.0 ml / standard	100	6291331*LLG
10.0 ml / standard	100	6291332*LLG
25.0 ml / standard	25	6291333*LLG
50.0 ml / standard	25	6291334*LLG
0.1 ml / bioclean [®] sterile	100	6291335*LLG
0.2 ml / bioclean [®] sterile	100	6291336*LLG
0.5 ml / bioclean [®] sterile	100	6291337*LLG
1.0 ml / bioclean [®] sterile	100	6291338*LLG
2.5 ml / bioclean [®] sterile	100	6291339*LLG
5.0 ml / bioclean [®] sterile	100	6291340*LLG
10.0 ml / bioclean [®] sterile	100	6291341*LLG
25.0 ml / bioclean [®] sterile	25	6291342*LLG
50.0 ml / bioclean [®] sterile	25	6291343*LLG